



COMPATIBILITY MATRIX - AEC

ORIGINATOR'S SPEC/DWG NO.	SUP73799200
AEC BOARD ASSEMBLY NO.	737992xx

REV	ECO	APPROVAL	DATE
A	NEW RELEASE	ORIGINATOR: B. ZUEST	
	(Formerly 737707)	DESIGN AUTH.: J. CUNNINGHAM	
		MFG. ENGINEER: S. CARTWRIGHT	12 MAR 08

PROPRIETARY AND CONFIDENTIAL

The information contained in this document is proprietary to Communications & Power Industries Canada Inc. (CPI), has been designed and developed at private expense, and is the exclusive property of CPI. The information contained herein is loaned in confidence and may not be duplicated in whole or in part, or be used for re-engineering, reverse engineering, or otherwise reproducing in any form or creating or attempting to create or permitting, allowing or assisting others to create or manufacture CPI's product or products derived therefrom, without the express written permission of CPI.

Copyright © 2007 by Communications & Power Industries Canada Inc. All rights reserved.

COMPATIBLE AEC CHAMBERS FOR AEC BOARD 737992xx: 4 CHANNEL SOLID STATE

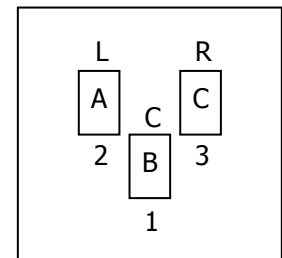
CHAMBER COMPATIBILITY NOTES

AEC Board, 737992-xx, is compatible with Solid State Chambers requiring / providing the following connections.

Standard/Regular Dose								
Plug & Function →	737992-00		737992-01		737992-02		737992-04	
	Weco	Function	Lemo (1)	Function	Lemo (2)	Function	Lemo (4)	Function
Field - Center	3	+ (Anode)	1	+	1	+	1	+
	4	- (Cathode)	6	-	6	-	6	-
* Field - Left	5	+ (Anode)	2	+	2	+	2	+
	6	- (Cathode)	5	-	5	-	5	-
* Field - Right	1	+ (Anode)	3	+	3	+	3	+
	2	- (Cathode)	4	-	4	-	4	-
Shield	7	Ground	Housing	Ground	Housing	Ground	Housing	Ground

High Dose Range								
Plug & Function →	737992-05		737992-06					
	Weco	Function	Lemo (1)	Function				
Field - Center	3	+ (Anode)	1	+				
	4	- (Cathode)	6	-				
* Field - Left	5	+ (Anode)	2	+				
	6	- (Cathode)	5	-				
* Field - Right	1	+ (Anode)	3	+				
	2	- (Cathode)	4	-				
Shield	7	Ground	Housing	Ground				

- * AEC Board Jumpers, JW1 to JW8, reverse the L and R field selections.
 In Normal (N) position;
 Pins 5/6 of J11-J14, Weco (or Pins 2/5 of J1-J4, Lemo) connects to left field.
 Pins 1/2 of J11-J14, Weco (or Pins 3/4 of J1-J4, Lemo) connects to right field.
 In Reverse (R) position;
 Pins 1/2 of J11-J14, Weco (or Pins 3/4 of J1-J4, Lemo) connects to left field.
 Pins 5/6 of J11-J14, Weco (or Pins 2/5 of J1-J4, Lemo) connects to right field.



Field Selections
 Normal (N) position
 A, B, C = 2, 1, 3 = Fields L, C, R
 Reverse (R) position
 A, B, C = 3, 1, 2 = Fields R, C, L

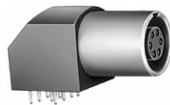
Use and disclosure is subject to the restrictions on the front page of this CPI document.

COMPATIBLE AEC CHAMBERS FOR AEC BOARD 737992xx: 4 CHANNEL SOLID STATE

CHAMBER COMPATIBILITY NOTES

Manufacturer	Chamber Model	Assembly No.	Quantity & Connector Type	Dose Range
Claymount (Comet AG)	SSMC 501 (Telamat B3-C) SSMC 502 (Telamat B3-AC) SSMC 503 (Telamat B3) SSMC 504 (Telamat B3A.12) SSMC 505 (Telamat XB1) SSMC 506 (Telamat XB3)	737992-01	1 – Lemo 4 – Weco	Standard/Regular
		737992-02	2 – Lemo 4 – Weco	Standard/Regular
		737992-04	4 – Lemo 4 – Weco	Standard/Regular
		737992-06	1 – Lemo 4 – Weco	High Dose

- Notes:**
- (1) All Channels must be configured for NO preamplifier.
 - (2) When the 737992-xx AEC board is installed, the Chamber type must be set to **ION** in the generator AEC setup menu.
 - (3) Connector Types on AEC board



LEMO



WECO

Use and disclosure is subject to the restrictions on the front page of this CPI document.