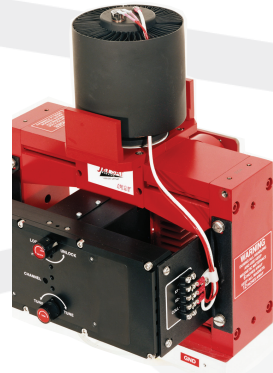


C-Band Klystrons

VKC7980 - Wide Bandwidth Series

The Wide Bandwidth C-Band klystron series is designed for use in ground based earth-to-satellite communication amplifiers. This family of klystrons provides a minimum output power of 3000 watts over an instantaneous bandwidth of 80 MHz. These klystrons are configured to provide users with 12 channels thus allowing operators to select preset center frequencies within seconds. As an option, Digital Fast Tuner System (DFTS) channel changers are available for sub-second selection of up to 50 channels.



RF and Electrical Specifications

Frequency Range (Channel Centers)	
VKC7980B	5.850 to 6.450 GHz
VKC7980W	5.850 to 6.480 GHz
Output Power	
All Models	3000W
Instantaneous Bandwidth - minimum at -1 dB points	
All Models	80MHz
Gain - minimum (At rated power)	30 dB
Beam Voltage - maximum	8.5 kV
Beam Current - maximum	1.15A
Heater Voltage - nominal	6.0 V
Heater Current - typical	6.1 A

Physical Characteristics

Dimensions	See outline drawings.
Weight - approximate	70 lb (32 kg)
Operating Orientation	Collector up
Cooling	Forced Air
collector flow - minimum	1000 lb/hr (450 kg/hr)
body flow - minimum	90 lb/hr (41 kg/hr)
RF Connectors	
output	Mates with CPR-137F flange
input	Mates with type "N" plug, UG-21D/U
Focusing	Integral permanent magnet

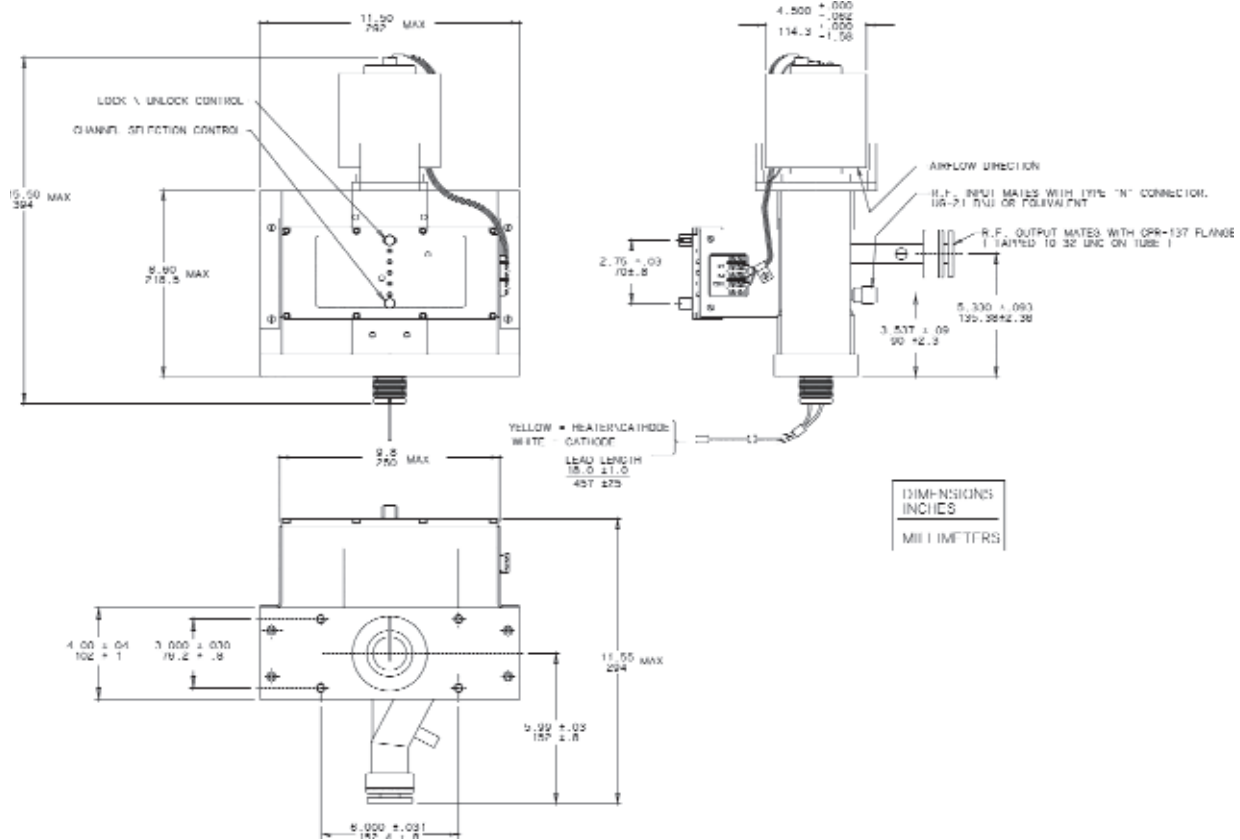
VKC7980 - Wide Bandwidth Series

Typical Characteristics

Type	Frequency Range (GHz)*Note 1	Instantaneous Bandwidth (MHz)*Note 2	Output Power (W)	Gain (dB)	Beam Voltage (kV)	Beam Current (mA)
VKC7980B	5.850 - 6.410	89	3100	33	8.3	1.14
VKC7980W	5.850 - 6.460	89	3100	34	8.4	1.14

- Note 1: Frequencies listed are channel centers.
- Note 2: Bandwidth measured at -1dB points.
- For full specifications please contact CPI.

Sample Outline Drawing



For complete information on the full Wide C-Band Series and other klystrons used in satellite communications, please contact your local CPI office, or CPI Canada Inc.



Communications & Power Industries Canada Inc.
 45 River Drive / Georgetown, Ontario / Canada L7G 2J4
 Hot Line Telephone: 1-800-267-JETSAT
 Tel: (905) 877-0161 Fax: (905) 877-5327
 E-MAIL: marketing@cmp.cpii.com
 WEB: www.cpii.com/cmp