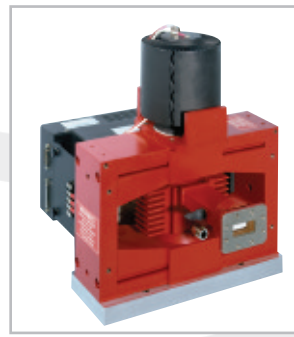
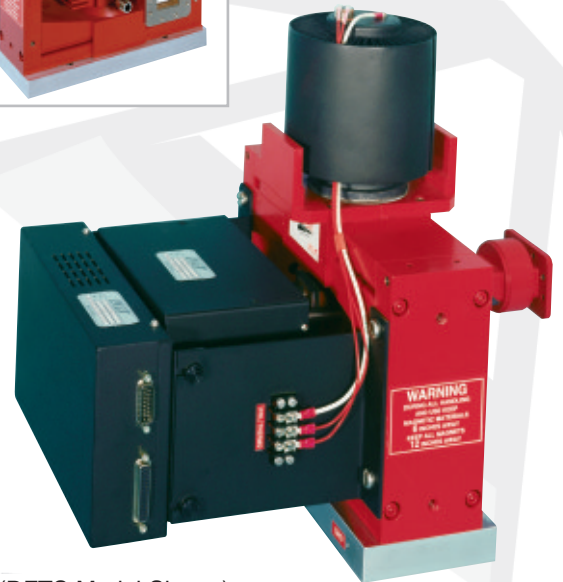


C-Band Klystrons

VKC2489 - Extended C-Band Series



The Extended C-Band klystron series is designed for use in ground based earth-to-satellite communication amplifiers. This family of klystrons provides a minimum output power of 3350 watts over an instantaneous bandwidth of 45 MHz. These klystrons can be configured to provide users with 6,12, or 24 channel configurations thus allowing operators to select preset center frequencies within seconds. As an option, Digital Fast Tuner System (DFTS) channel changers are available for sub-second selection of up to 50 channels.



(DFTS Model Shown)

RF and Electrical Specifications

Frequency Range (Channel Centers)	
VKC2489A	5.872 to 6.703 GHz
VKC2489B	5.745 to 6.703 GHz
VKC2489C	5.837 to 6.713 GHz
Output Power	
All Models	3350W
Instantaneous Bandwidth- minimum at -1 dB points	
All Models	45 MHz
Gain - minimum (at rated power)	40 dB
Beam Voltage - maximum	8.5 kV
Beam Current - maximum	1.15A
Heater Voltage - nominal	6.0 V
Heater Current - typical	6.1 A

Physical Characteristics

Dimensions	See outline drawings.
Weight - approximate	70 lb (32 kg)
Operating Orientation	Collector Up
Cooling	Forced Air
collector flow - minimum	1000 lb/hr (455 kg/hr)
body flow - minimum	90 lb/hr (41 kg/hr)
RF Connectors	
output flange	Mates with CPR-137
input	Mates with type "N" plug, UG-21D/U
Focusing	Integral permanent magnet

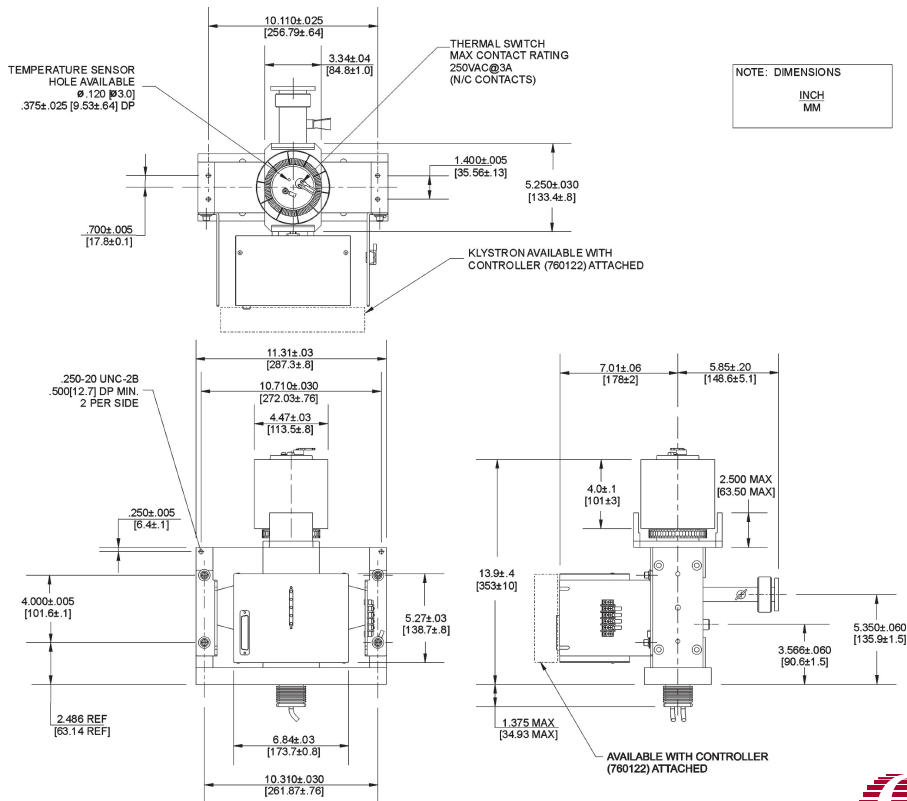
VKC2489 - Extended C-Band Series

Typical Characteristics

Type	Frequency Range (GHz)*Note 1	Instantaneous Bandwidth (MHz)*Note 2	Output Power (W)	Gain (dB)	Beam Voltage (kV)	Beam Current (mA)
VKC2489A	5.872 - 6.703	50	3460	43	8.4	1.14
VKC2489B	5.745 - 6.703	50	3460	43	8.4	1.14
VKC2489C	5.837 - 6.713	50	3450	43	8.4	1.14

- Note 1: Frequencies listed are channel centers.
- Note 2: Bandwidth measured at -1dB points.
- For full specifications please contact CPI.

Sample Outline Drawing



For complete information on the full Extended C-Band Series and other klystrons used in satellite communications, please contact your local CPI office, or CPI Canada Inc.



Communications & Power Industries Canada Inc.
 45 River Drive / Georgetown, Ontario / Canada L7G 2J4
 Hot Line Telephone: 1-800-267-JETSAT
 Tel: (905) 877-0161 Fax: (905) 877-5327
 E-MAIL: marketing@cmp.cpii.com
 WEB: www.cpii.com/cmp