

Touch Panel Controller

Features

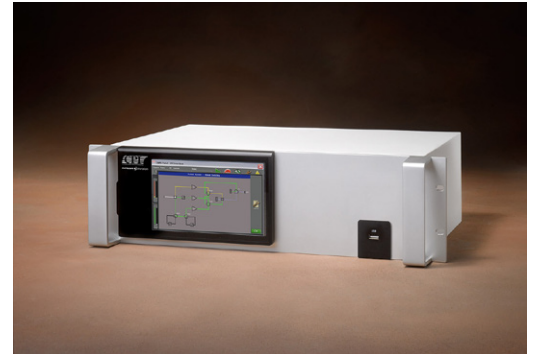
- Communicates with newer models via Ethernet, and with legacy amps via serial interface (RS-485). Supports SIM switch configuration software, controlling up to sixteen switches and ten amplifiers which have CAN-Bus architecture, or in other cases up to four switches and three amplifiers.
- Can be used as a switch monitor and manual override controller in systems where all HPAs are connected to a SIM switching system or legacy switch system.
- Provides upstream Ethernet interface for the connected legacy amplifiers:
 - Ethernet control only (BCIP or ACIP as supported by amplifier) or serial interface
 - Web interface available
- Able to provide remote control capability for multiple (SIM enabled) systems simultaneously

Local User Interface

- Same state-of-the-art interface as CPI's new T-Series indoor HPAs (without the RF sample port or front power switch)
- Touch-screen control panel
 - Display systems overview(s)
 - Display amplifier details
 - Control switch systems
 - Control amplifier(s)
 - Configure interfaces
 - Configure switch system
- USB Port
 - Download log of most (T-series) amplifiers to USB stick
 - Upload panel firmware from USB stick to any (T-series) amplifier
 - Download screen settings of remote controller's user interface
 - Upload screen settings of remote controller's user interface

M&C Interface

- BCIP over Ethernet (standard) to amplifiers
- Serial (BCIP and if legacy, ACIP) to amplifiers: RS 485
- Serial - Panel to M&C System: RS-232/485



Model 3RU

5.25" panel provides full M&C capability for CMPAs, CHPAs and most outdoor HPAs. For **satellite uplink applications**.

OPTIONS

- Second AC Input
- Redundant Power Supply

REGULATORY

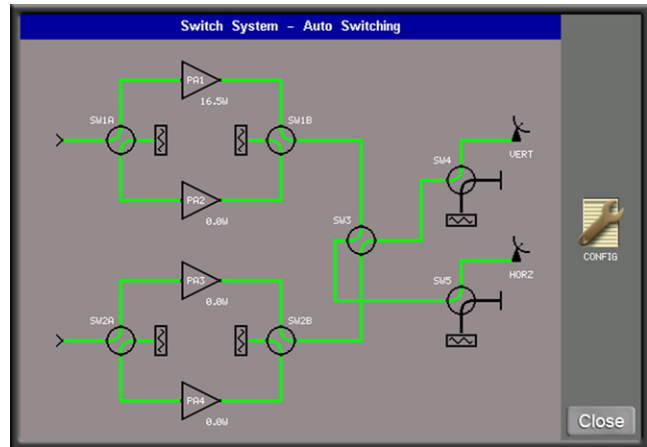
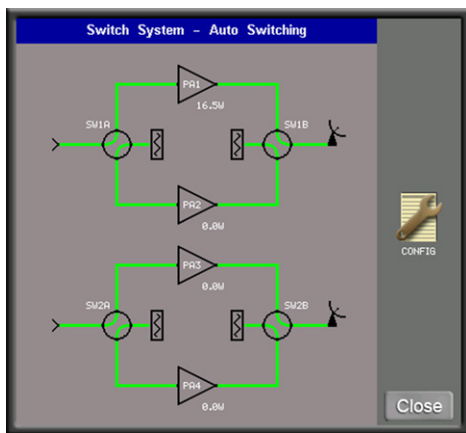
- RoHS Certified
- CE Marked
- EMC per Directive 2004/108/EC to Class A equipment level



811 Hansen Way, PO Box 51625
 Palo Alto, CA 94303 USA
 tel: +1 (650) 846-3803
 fax: +1 (650) 424-1744
 e-mail: satcommarketing@cpii.com
 website: www.cpii.com/satcom

Touch Panel Controller for CPI Satellite Uplink Amplifiers and Systems

Specification	Model 3RU
Display Screens	Redundant Switch System Status, Redundant Switch System Control, Amplifier Status, Amplifier Menu, Amplifier Meters, Amplifier Settings, Amplifier Event Log
System Indicators	M&C Remote Control, Local Panel Control
Touch Screen Controls	Local/Remote, Switch System Selector, Switch Auto/Manual, Manual Switch Control Amplifier Selector, Transmit and Standby, Fault Reset, RF Inhibit, Amplifier RF Power Level, Menu Selector
Rear Panel Connections/Controls	AC Prime Power Input, AC On/Off Switch, RS-485 to Amplifier(s) RS-232/422/485 Serial M&C Port, 10Base-T Ethernet M&C Port
Dimensions	5.25 x 19 x 10 inches max. (134 x 483 x 254 mm)
Weight	<15 lbs. (6.8 kg)
Input Power	100 to 240 VAC ±10%; 50/60 Hz
Power Consumption	< 20 watts
Ambient Temperature	-10°C to +50°C operating; -40°C to +71°C non-operating
Relative Humidity	95% non-condensing
Shock and Vibration	As encountered in normal transportation



System control page view of two separate redundancy systems