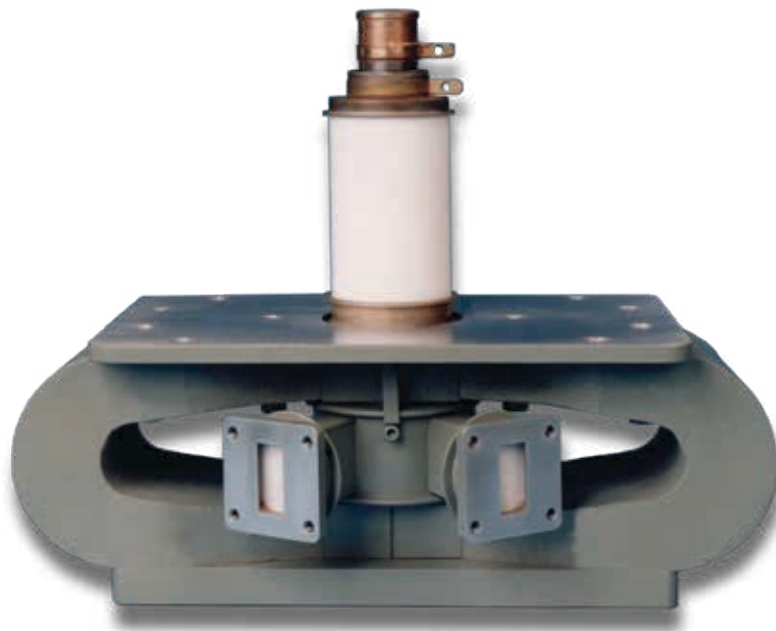
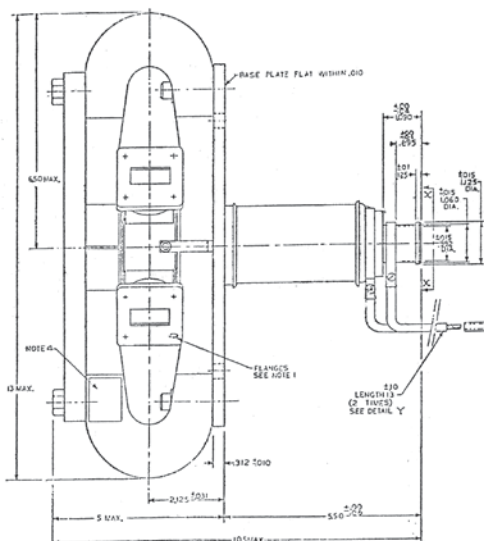


## Communications & Power Industries Crossed-Field Amplifier

With a history of producing high quality products, we can help your with CFA.

Contact us at [BMDMarketing@cpii.com](mailto:BMDMarketing@cpii.com) or at call us at +1 978-922-6000.



### FEATURES:

- Frequency 8.9 – 9.5 GHz
- Peak power output 900 kW
- Duty cycle .001
- Anode voltage 38 kV
- Anode current 60 amps
- Pulse width 0.83 microseconds
- Heater 10 volts @ 20 amps
- Liquid cooled anode

### BENEFITS:

- High peak power
- Wide band width

### APPLICATIONS:

- Ground based radar



**Beverly Microwave Division**  
150 Sohier Road  
Beverly, Massachusetts  
USA 01915

tel +1 978-922-6000  
email [BMDMarketing@cpii.com](mailto:BMDMarketing@cpii.com)  
fax +1 978-922-8914  
web [www.cpii.com](http://www.cpii.com)

For more detailed information, please refer to the corresponding CPI technical description if one has been published, or contact CPI. Specifications may change without notice as a result of additional data or product refinement. Please contact CPI before using this information for system design.

©2020 Communications & Power Industries LLC. Company proprietary; use and reproduction is strictly prohibited without written authorization from CPI.