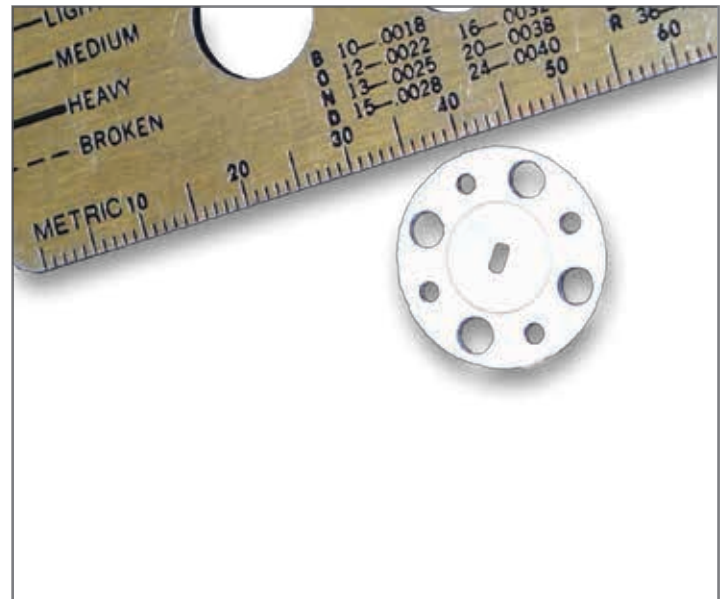


## W-Band Quartz Pressure Window

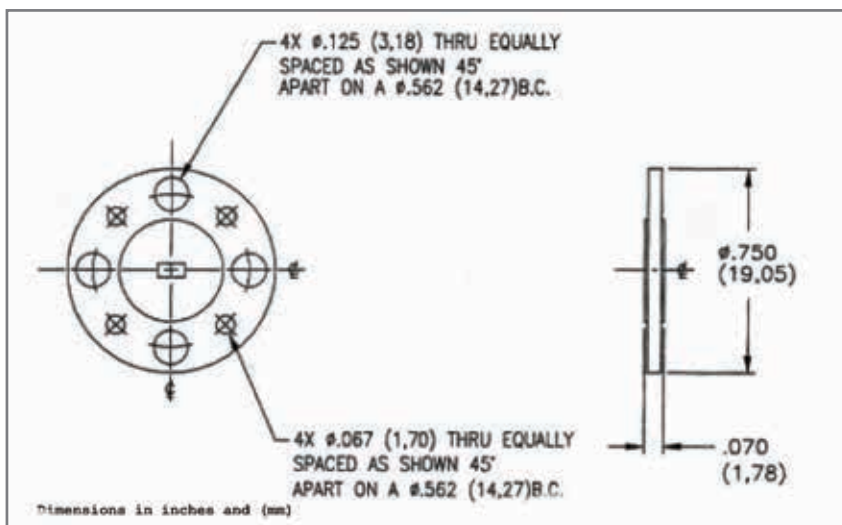
### VWW1107

#### Features:

- Frequency Range: 92.0 - 96.0 GHz
- VSWR: 1.30:1 max across band  
1.10:1 max at 94 GHz
- Insertion Loss: 0.18 dB max.
- Vacuum tight to 10<sup>-8</sup>
- Finish: Silver plate
- WG Size: WR10



W-Band quartz pressure window.



The values listed above represent specified limits for the product and are subject to change. The data should be used for basic information only. Formal, controlled specifications may be obtained from CPI for use in equipment design.

For information on this and other CPI products visit our webpage at [www.cpii.com/BMD](http://www.cpii.com/BMD), or contact:  
CPI Beverly Microwave Division, +1 (978) 922-6000 • FAX: +1 (978) 922-8914 • BMDmarketing@cpil.com