

# Millimeter Wave Coupled Cavity TWT Series

The VTA-6430A Series are 500W CW Coupled Cavity TWT's covering 27.5 - 31.0 GHz (Ka-Band) with 2 GHz instantaneous bandwidth, periodic-permanent-magnet focused, waveguide input, waveguide output, conduction cooled. This high-efficiency CC TWT is designed for use in satellite communication amplifiers



Custom configurations are also available. These variations in the performance and configuration include: mechanical configuration, electrical and RF connections, and cooling method (affects average power level).

## FEATURES

- 500 Watt CW
- 27.5 - 31.0 GHz
- 2 GHz Instantaneous Bandwidth
- PPM Focusing
- Waveguide Input and Output  
(WG-28 Compatible with UG-599/U)
- Vertical or Horizontal Mounting Position
- Weight: 10 lbs.
- Conduction Cooled

MODEL	FREQUENCY (GHZ)	POWER OUTPUT (MIN)
VTA-6430A1	27.5 - 31.0	500 W CW

## TYPICAL OPERATING PARAMETERS

	MAXIMUM	MINIMUM	TYPICAL	UNITS
<b>Filament Voltage:</b>	6.4	6.2	---	Vdc
<b>Filament Current:</b>	1.6 (Surge: 5.0)	1.0	---	Adc
<b>Focus Electrode Voltage:</b>	-6.3	-100	---	Vdc
<b>Beam Voltage:</b>	14.5	13.5	---	kVdc
<b>Cathode Current:</b>	350	---	---	mAdc
<b>Body Current</b>	6.0	---	---	mAdc
<b>Collector Voltage 1:</b>	36.0	34.0	---	% of Ew
<b>Collector Current 1:</b>	100	---	---	mA
<b>Collector Voltage 2:</b>	13.5	11.5	---	% of Ew
<b>Collector Current 2:</b>	350	---	---	mA
<b>Filament Warm-up Time:</b>	3.0	---	---	Minutes

The values listed above represent specified limits for the product and are subject to change. The data should be used for basic information only. Formal, controlled specifications may be obtained from CPI for use in equipment design.

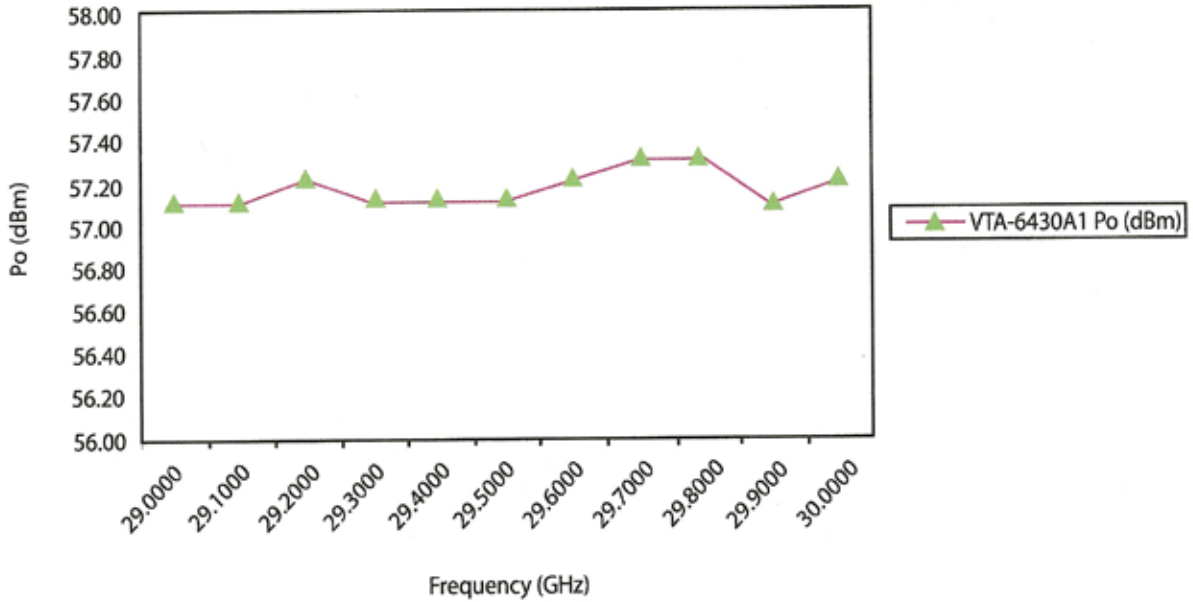


**For information** on this and other CPI products, visit our website at: [www.cpii.com](http://www.cpii.com),

or contact: CPI MPP Division, 607 Hansen Way, Palo Alto, CA 94303

TELEPHONE: 1(800) 414-8823. FAX: (650) 856-0705 | EMAIL: [marketing@cpii.com](mailto:marketing@cpii.com)

VTA-6430A1 Po (dBm)



The values listed above represent specified limits for the product and are subject to change. The data should be used for basic information only. Formal, controlled specifications may be obtained from CPI for use in equipment design.



**For information** on this and other CPI products, visit our website at: [www.cpii.com](http://www.cpii.com),

or contact: CPI MPP Division, 607 Hansen Way, Palo Alto, CA 94303

**TELEPHONE:** 1(800) 414-8823. **FAX:** (650) 856-0705 | **EMAIL:** [marketing@cpii.com](mailto:marketing@cpii.com)